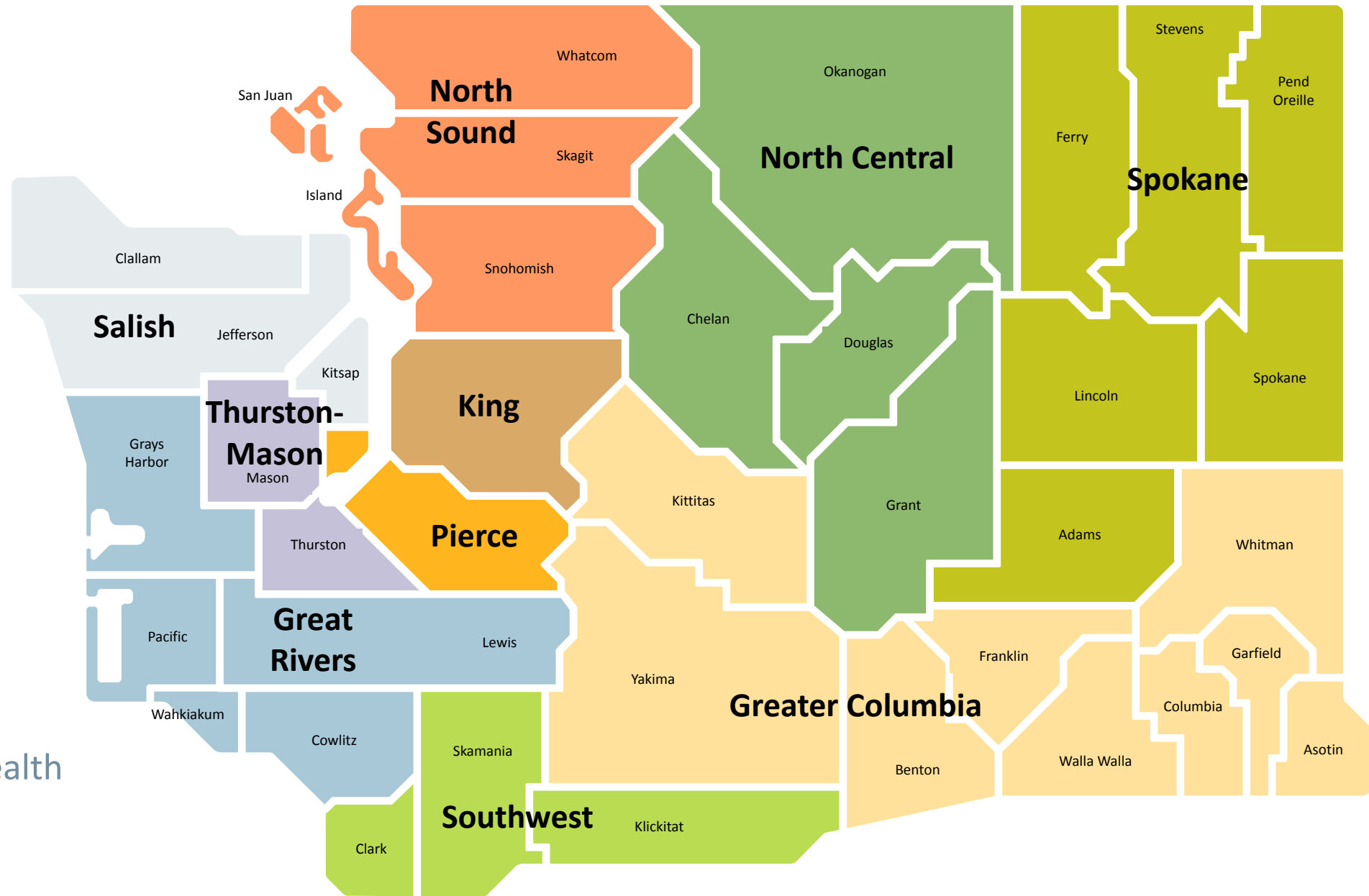


- **Brigid Collins**
- Kindering
- Center for Human Services
- Navos
- Cooper House
- Ryther
- Akin – King
- Akin – Spokane
- Comprehensive Life Resources
- Hope Sparks
- Akin – Vancouver
- Family Solutions
- Catholic Charities
- Kitsap Behavioral Health
- Akin - Wenatchee

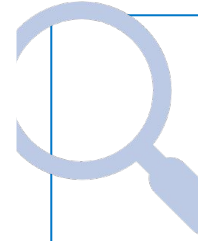


Warmline and referral access lines

- Mental Health Referral Services (MHRS) for Children and Teens
 - 1-833-303-5437
 - Monday through Friday, 8 am – 5 pm
- Help Me Grow Washington
 - 1-800-322-2588
- Perinatal Support Washington Warmline
 - 1-888-404-7763
 - Monday through Friday, 9 am – 4:30 pm

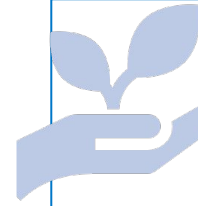
Infant-Early Childhood Mental Health Service Models Toolkit

- This toolkit provides guidance and best practices on topics including:
 - **NEW!** Core service elements of IECMH treatment
 - Avenues to provide mental health services & billing Apple Health
 - Requirements to become a licensed mental health provider or behavioral health agency (BHA)
 - Additional resources and supports



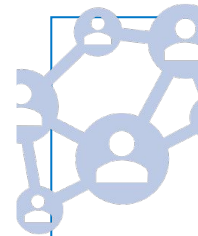
Mental health assessment & diagnosis

- Multisession assessment
- Caregiver only sessions
- Developmentally-appropriate diagnostic tool



Mental health treatment

- Joint child-caregiver sessions (i.e. dyadic family therapy)
- Caregiver only sessions
- Developmentally-oriented approaches



Additional considerations

- Natural settings
- Collaboration & coordination
- Concrete assistance

Who provides IECMH treatment?

Washington Department of Health (DOH) oversees the administration and requirements for licensure, certification and registration of health care practitioners under the **Uniform Disciplinary Act.** ([WAC 246-12-001](#))

Licensed mental health professionals
([WAC 182-531-1400](#))

- May provide services described in HCA's Apple Health [Mental Health Billing Guide](#) (Part I)
- Includes:** Psychologist, LMHC, LASW, LICSW, LMFT, Psychiatrist, P-ARNP, LMHC-A, LASW-A, LMFT-A

Mental health professionals working for a licensed Behavioral Health Agency
([WAC 246-341-0515](#))

- May provide services described in HCA's Apple Health [Mental Health Billing Guide](#) (Part II) and Service Encounter Reporting Instructions ([SERI](#))
- Includes:** Psychologist, LMHC, LASW, LICSW, LMFT, Psychiatrist, P-ARNP, LMHC-A, LASW-A, LMFT-A, P-RN, PA w/ psych supervision, Licensed, Certified, or Registered AAC

IECMH billing resources from HCA



Visit our websites

[Infant-early childhood mental health](#)
[Mental Health Assessment for Young Children](#)

Find MHAYC billing resources

Recordings, slides, and other resources under
How Do I Bill? on our [MHAYC website](#)



Email us!
[Kiki Fabian](#)
[Christine Cole](#)

Sign up for alerts & updates

Subscribe to [Prenatal – Age 25 Behavioral Health](#) topics through GovDelivery



Join HCA IECMH Office Hours

Sign-up under **Office Hours** on our
[IECMH website](#)



hca.wa.gov/iecmh

Free training on IECMH assessment & diagnosis

- IECMH Workforce collaborative

For mental health providers	For allied professionals
DC:0-5 Clinical Training DC:0-5 Communities of Practice	DC:0-5 Overview Training
Additional workshops on screening, referral, coordination, assessment & diagnosis	

- Visit the [IECMH-WC Training and Resource Hub](#)
- Sign up for the [IECMH-WC Communications List](#)
- Email us at: training@wa-aimh.org



WASHINGTON ASSOCIATION FOR
Infant Mental Health

Washington State
Health Care Authority

Reach out to HCA's IECMH team



Christine Cole, LCSW, IMH-E®

IECMH Program Manager
Clinical Quality Care Transformation
Christine.Cole@hca.wa.gov



Kimberly "Kiki" Fabian, M.Ed.

IECMH Analyst
Behavioral Health & Recovery
Kiki.Fabian@hca.wa.gov